

**DESIGNER NAME**  
LEE SENG HON & DESIGN TEAM

**DESIGNATION**  
CREATIVE DIRECTOR

**PROJECT LOCATION**  
SANCTUARY GARDENS,  
TAMBUN IPOH

**PROJECT TYPE**  
DOUBLE-STOREY LINK HOUSE

**COMPLETION DATE**  
FEBRUARY 2016

**PHOTOGRAPHER**  
SEE YAU

**GOLDFIELDS CONCEPTS SDN BHD**

W [www.goldfields.com.my](http://www.goldfields.com.my)  
T 1700 81 7500

This cosy design is modernised with geometric patterns and industrial elements that create a balance between aesthetics and functionality.



# GEOMETRIC EXTRAVAGANZA

THIS COSY SHOWHOUSE DESIGN IS DECORATED WITH SOFT COLOUR TONES AND UNCOMPLICATED FURNITURE PIECES IN AN ATTEMPT TO STRENGTHEN ITS HOMELY APPEAL AS ITS GEOMETRICAL DECOR BRINGS THE DESIGN INTO THE 21<sup>ST</sup> CENTURY.



Aside from creating great first impressions, the design of a showhouse could also be used to illustrate the potential of its interior architecture. With this particular project, the design team has fashioned its interior spaces with minimalist touches balanced with wooden features and geometrical shapes to create a modern home that is both practical and comfortable. Sticking with a soft neutral colour scheme, the design appeals to families who emphasise on a safe and healthy lifestyle.

除了为潜力买家创建一个深刻的第一印象，Sanctuary Garden示范单位基于展示内部潜质而设计。在这所特定的设计项目，Goldfields Concepts于内部结构塑造了木制装饰和几何形状的平衡设计，致力于打造一个符合现代生活需求的居住环境，为业主带来一个既实用又舒适的简约风格。透过自然的中性色调，强调着一种向往安全和健康的家庭生活方式。



**TOP LEFT**

The design team has kept the common area open as the presence of natural lighting gives the space a warm and inviting vibe.

设计团队尽最大的力量保持室内的自然采光，以营造出温暖和温馨的居家氛围。

**BOTTOM LEFT**

Just like most modern interior design, the design of this showroom exemplifies the lifestyle needs of families today.

正如多数现代室内设计，这间示范单位的设计正体现了都市家庭的生活需求。

**RIGHT**

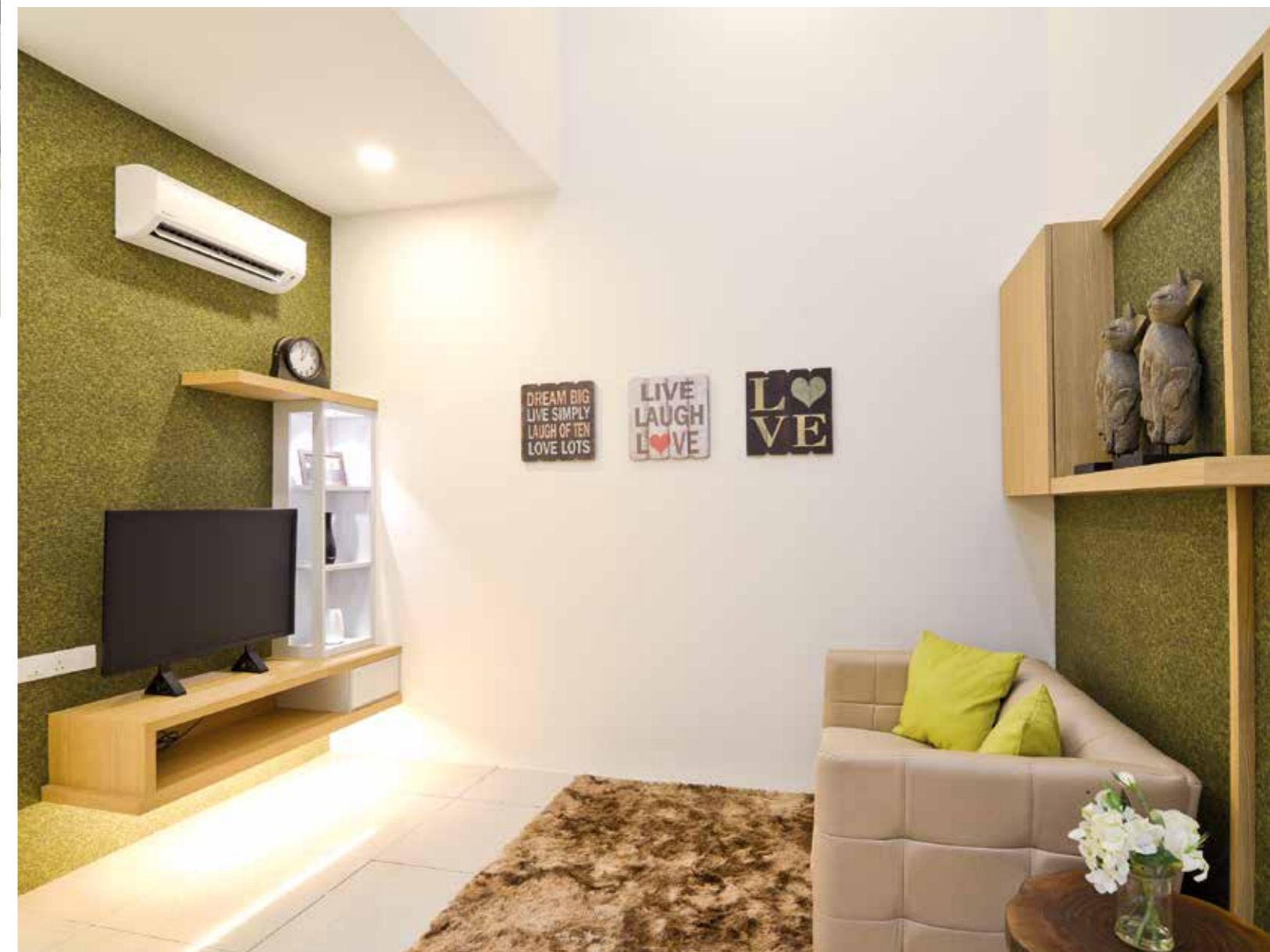
This design also features a smaller family room made to provide more privacy and intimacy for the family.

设计特点中也包括了小偏厅的划分，为家庭保留一个较为私密的活动空间。



In order to enhance the practicality of its space, the common area on the ground floor is kept open, offering wonderful natural lighting and air ventilation to the interior. The cosy ambience is accentuated by the use of sleek furnishing options as its wood finishes add warmth into the space. A stylish semi-open partition is added into the space separating the living room and the dining area to provide the necessary versatility to the space as it maintains the visual connectivity between both areas. Additionally, the design team has decorated the white walls with simple artwork to give the house clean and modern visual attractions.

基于提升空间的实用性，设计师在底层的客厅区域保持开放式设计，为入屋参观的客人感受到室内优越的自然采光和空气流通。舒适的氛围来自通过圆滑的家具挑选，其中以突出家具的木饰增添空间温馨感。由客厅区域分隔出来的餐区，强大的功能性除了满足生活上的储藏需求，其半开放式的餐区设计更有助于衍生客厅与餐区之间的视觉连接，保持着宽敞而舒适的生活空间。此外，Goldfields Concepts设计团队为这所示范单位刷上大量的白色墙漆，并以简约的艺术作品作装饰，呈现出一个干练而极富现代风格的理想住所。





The master bedroom features a healthy amount of wooden decor to promote a calming atmosphere ideal for rejuvenating the body and soul. Lighter neutral colours were used to balance the rich wood tones as minimalistic design touches continue to dictate the choice of furniture. The other bedrooms are designed with similar subtlety with a straightforward style of decoration soothing wooden features.

主卧室设有一系列完整的木质装饰，促进平静怡人的气氛之余，设计团队亦致力于创建一个振兴身心的休息环境。自然的淡色调被广泛运用作简约卧室设计的主轴，以缓冲和平衡家具上丰富的木质色调。至于其他卧室，同样施以简约舒适的设计风格以及木质装饰，打造连贯一致室内设计。

